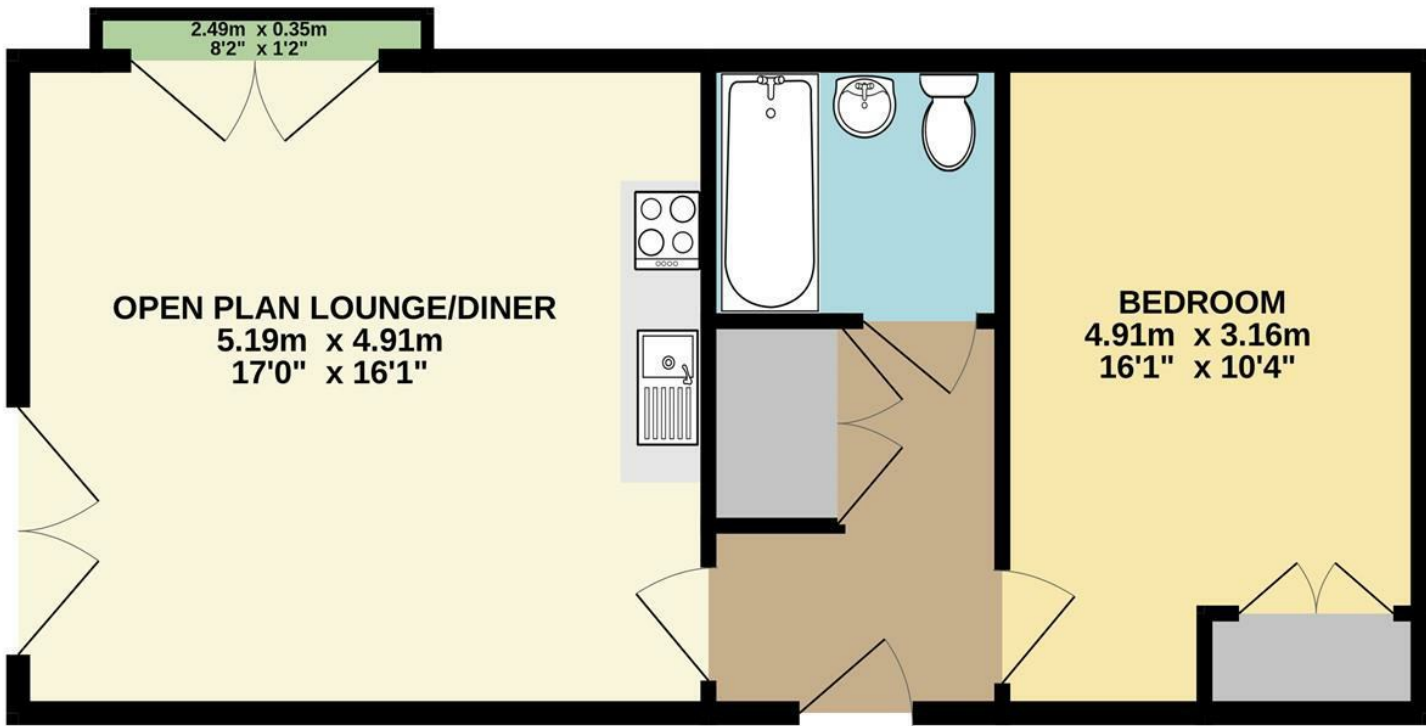


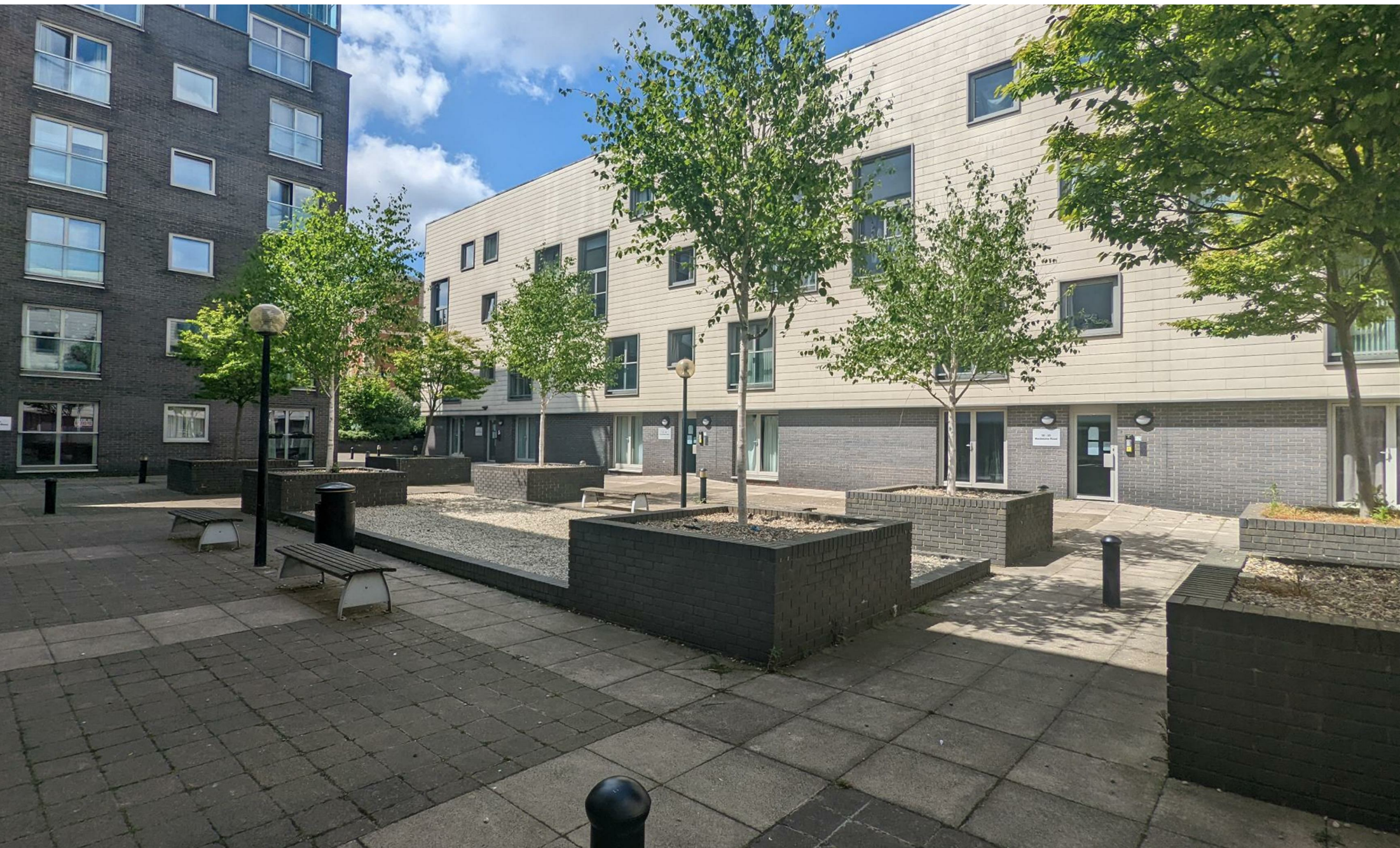
GROUND FLOOR  
51.8 sq.m. (558 sq.ft.) approx.

Energy Efficiency Rating		Current	Potential
Very energy efficient - lower running costs			
(92 plus) A			
(81-91) B			
(69-80) C			
(55-68) D		57	58
(39-54) E			
(21-38) F			
(1-20) G			
Not energy efficient - higher running costs			
England & Wales		EU Directive 2002/91/EC	

Disclaimer – In accordance with the Property Misdescriptions Act, the company gives notice that all descriptions, references to condition, necessary permissions for use and other details are given in good faith and believed to be correct, but any intending lessees do not rely on them as statements of fact, but must satisfy themselves by inspection or other means, as to their accuracy.



TOTAL FLOOR AREA : 51.8 sq.m. (558 sq.ft.) approx.  
Whilst every attempt has been made to ensure the accuracy of the floorplan contained here, measurements of doors, windows, rooms and any other items are approximate and no responsibility is taken for any error, omission or mis-statement. This plan is for illustrative purposes only and should be used as such by any prospective purchaser. The services, systems and appliances shown have not been tested and no guarantee as to their operability or efficiency can be given.  
Made with Metropix ©2023



Maidstone Road | Norwich | NR1  
Guide Price £160,000



abbotFox presents this chain free, first floor apartment. Located within the heart of Norwich City Centre, this stylish apartment affords a high degree of convenience. Accommodation comprises; entrance hall, spacious, dual-aspect open plan living accommodation, generous double bedroom with built in wardrobes and a three-piece family bathroom. An ideal opportunity for any first time buyer or buy-to-let investor, an internal viewing comes highly recommended.

Guide price - £160,000 - £170,000

